

REFINE TECHNOLOGIES



*Driving Law-Enforcement
Electronic Monitoring*



CO-EYE Tracker

CO-EYE Tracker features

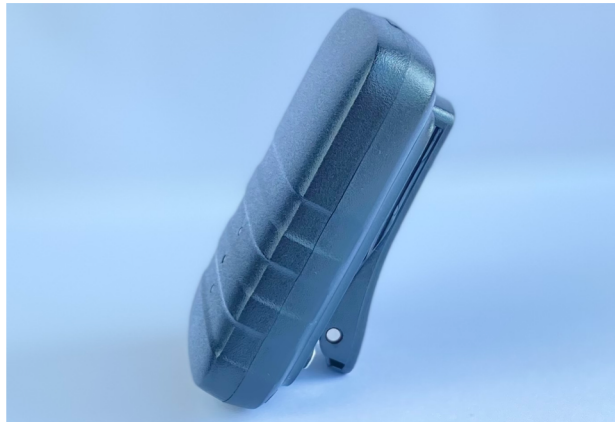
- Two-piece tracking device for i-Bracelet
- High-sensitivity scan for multiple bracelets
- GPS/BeiDou/Glonass support
- GSM/GPRS/WCDMA cellular support
- GNSS/WIFI/Cell always-on positioning
- Internal barometer for floor positioning
- Advanced tamper and motion detection
- Stored tracking data more than 1 year
- 4GB on-board storage for “Black Box” record
- 72-hour battery life / 2-hour charge
- 3-axis accelerator and 3-axis compass support
- Wi-Fi and Bluetooth enabled
- Remote voice monitoring
- Lightweight and easily worn on hip
- Remote software update and control
- Smallest base station on the market



Multiple detection mechanisms on the Two-Piece GPS unit and the offender's body-worn transmitter provide electronic and physical evidence of tamper

**CO-EYE Tracker
is ideal for**

- Community corrections
- Domestic and family caseloads
- Bail and sentencing reform
- Prison and jail overcrowding
- Furlough from prison and jail



Smallest size in market

Tracker: "BP" pager size

i-Bracelet: fitness bracelet size

**Heavy, bigger,
uncomfortable,
and expensive
ankle bracelets are
a thing of the past**

CO-EYE Tracker built for radio frequency electronic monitoring. It has been selected over and over by correctional agencies in China nationwide due to its tamper-resistant features, durable bracelet and base station, cost-effectiveness, and reception-reliability features. Optimized to work with today's society communications, the House Arrest system can transmit data through ubiquitous cellular network to software platform.